

WILTSHIRE POLICE

CPT Area Briefing

Wiltshire East Community Policing Team

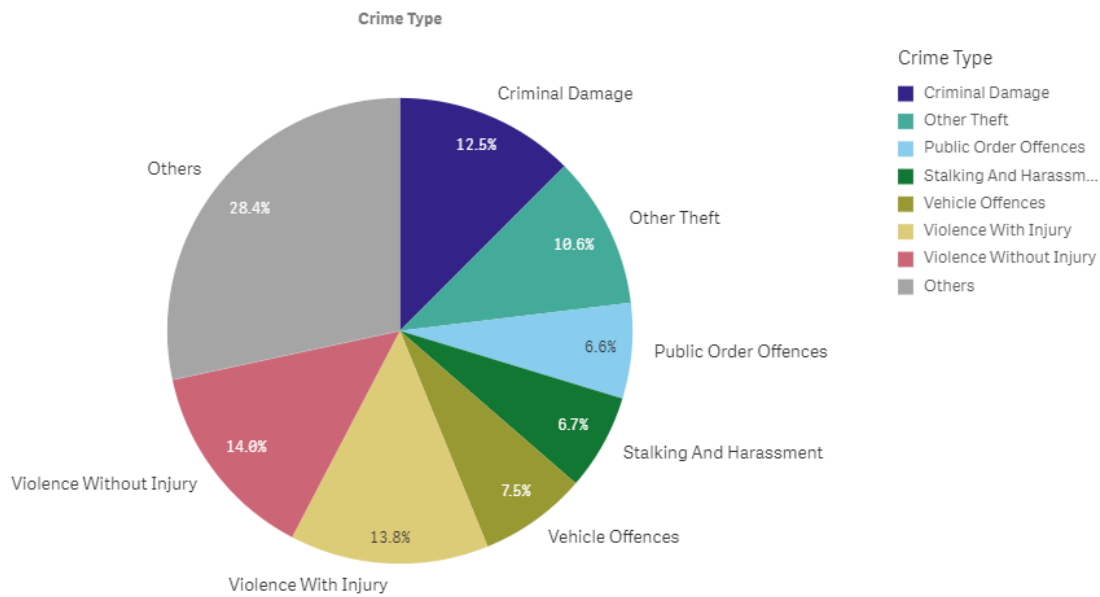


Proud to serve and protect our communities

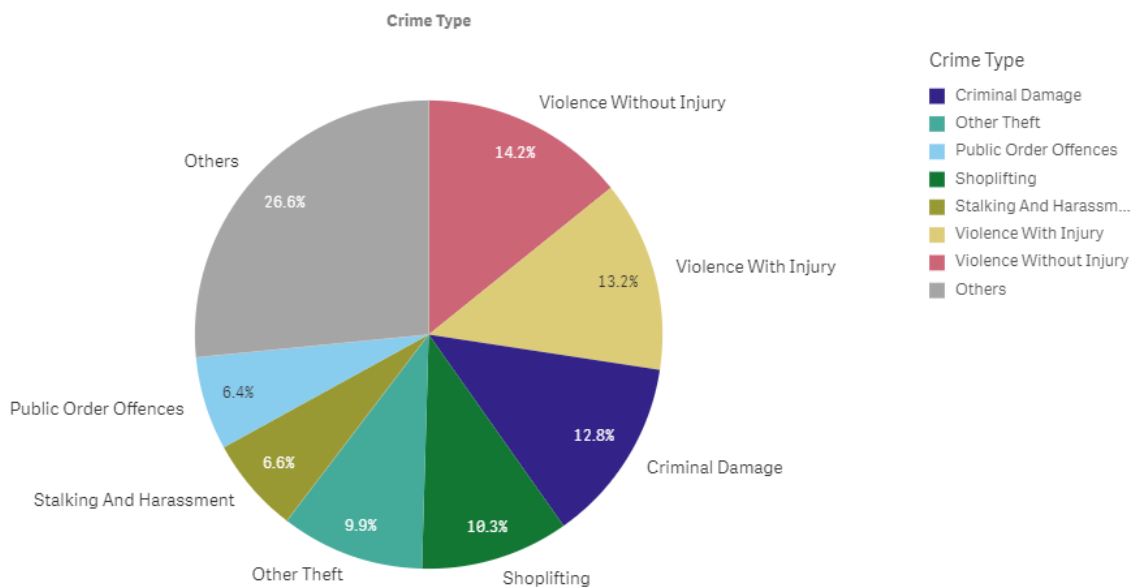
October 2019

PERFORMANCE

Your Area - Five Highest Crime Groups (Previous 12 months)



Force Area - Five Highest Crime Groups (Previous 12 months)



Wiltshire East CPT - crime and incident demand for the 12 months to September 2019

WILTSHIRE POLICE

CPT Area Briefing

Wiltshire East Community Policing Team



Proud to serve and protect our communities

October 2019

Force-wide

- Wiltshire Police has had an increase in the volume of recorded crime by 1% in the 12 months to September 19 and continues to have one of the lowest crime rates in the country.
- Our service delivery remains consistently good.
- In September, we received 8,312 999 calls which we answered within 6 seconds on average and 12,474 CRIB calls which we answered within 2 minutes 08 seconds on average.
- In September, we also attended 1,344 emergency incidents within 17 minutes and 00 seconds on average.
- Wiltshire Police has seen a 17% reduction in vehicle crime and 21 per cent in residential burglaries in the 12 months to September 2019.
- The Crime Survey of England & Wales recently ranked Wiltshire as one of the top forces (78.3%) nationally for public confidence. It covers the 12 months to March 2019.
The publication can be found here: WWW.CRIMESURVEY.CO.UK

For more information on Wiltshire Police's performance please visit:

PCC's Website - <https://www.wiltshire-pcc.gov.uk/article/1847/Performance>

HMICFRS Website - <https://www.justiceinspectorates.gov.uk/hmicfrs/police-forces/wiltshire/>

Police.uk - <https://www.police.uk/wiltshire>

WILTSHIRE POLICE

CPT Area Briefing

Wiltshire East Community Policing Team

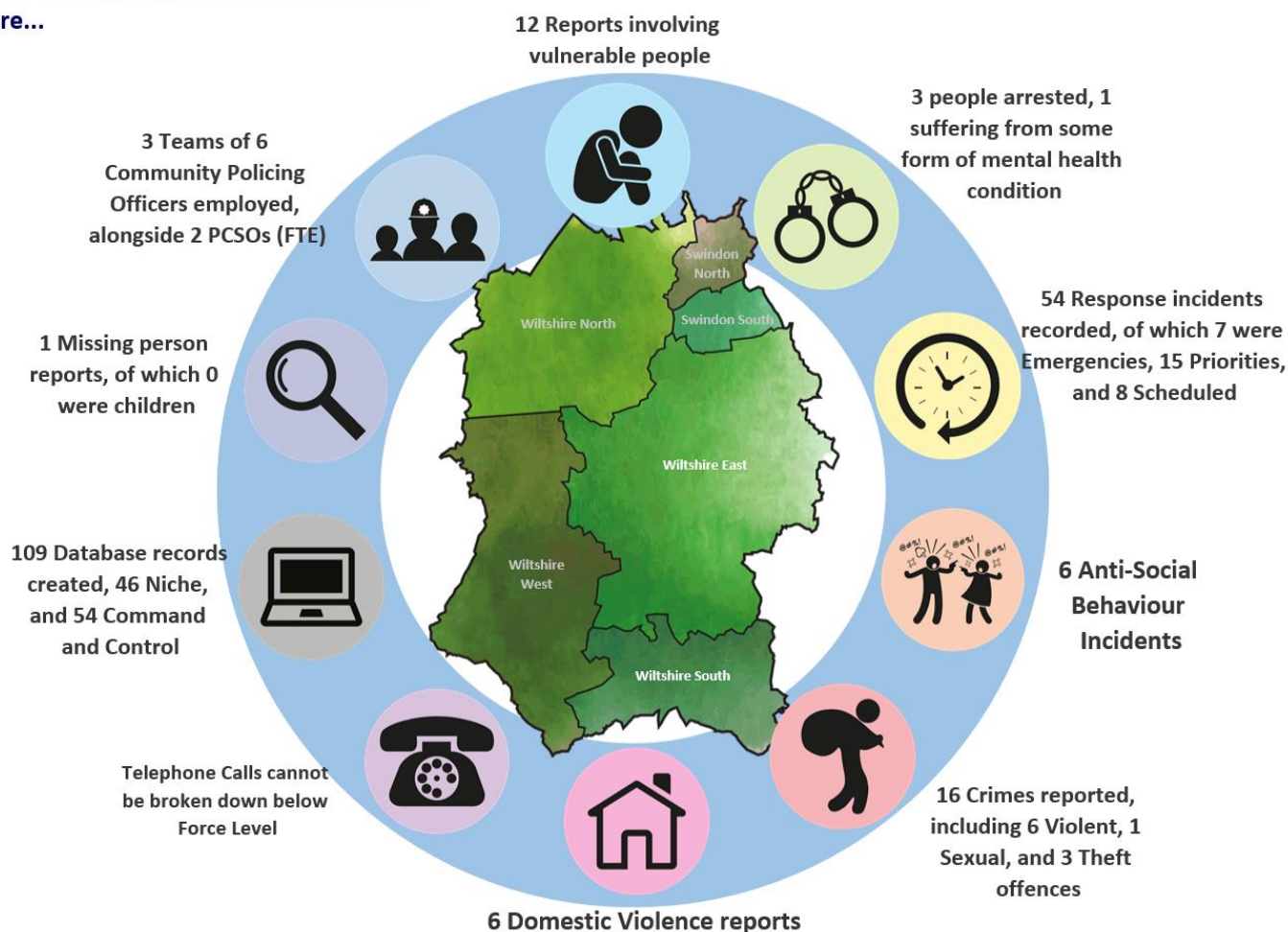


Proud to serve and protect our communities

October 2019

Area specific

On an average day in Wiltshire East there were...



Wiltshire East CPT Demand Overview – 12 months to September 2019

PEWSEY CRIME STATISTICS FROM 01/09/2019 – 21/10/2019:

- 16 REPORTS ASB
- 6 REPORTS OF BURGLARY
- 7 REPORTS OF DRUG OFFENCES
- 30 REPORTS OF THEFT
- 32 REPORTS OF VIOLENT CRIME
- 10 REPORTS OF CRIMINAL DAMAGE
- 7 REPORTS OF PUBLIC ORDER
- 20 REPORTS OF VEHICLE OFFENCES (Beauty Spot theft from motor vehicles)

WILTSHIRE POLICE

CPT Area Briefing

Wiltshire East Community Policing Team



Proud to serve and **protect** our communities

October 2019

WILTSHIRE POLICE

CPT Area Briefing

Wiltshire East Community Policing Team



Proud to serve and protect our communities

October 2019

HIGH LEVEL CPT UPDATES:

PC Benson and PCSO Braithwaite from team 2 have been out patrolling the rural parts of the Marlborough area this evening including East Grafton and Burbage #SafeEastCPT



WILTSHIRE POLICE

CPT Area Briefing

Wiltshire East Community Policing Team



Proud to serve and protect our communities

October 2019

Sgt Tracey Holloway & PCSO Mark Braithwaite from East Wilts CPT were at Marlborough Town hall this evening to discuss the creation of a shop watch scheme in the Town. The aim of this is to work with the Town Council and local businesses to reduce and prevent crime.



WILTSHIRE POLICE

CPT Area Briefing

Wiltshire East Community Policing Team



Proud to serve and **protect** our communities

October 2019

Speed checks on London Rd by Team 4 this afternoon. Out of 100+ vehicles checked, the top speed recorded was 35mph



Officers from Wiltshire East Community Policing Team are out at the Marlborough MOP fair this evening. #SafeEastCPT



WILTSHIRE POLICE

CPT Area Briefing

Wiltshire East Community Policing Team



Proud to serve and protect our communities

October 2019

YOUR CPT – Wiltshire East



Acting Inspector Pete Foster



Sergeant Tracey Holloway

Community Co-ordinators:



PC Emily Grigor (Marlborough and Pewsey)



PCSO Mark Braithwaite (Marlborough Town)

Mark.braithwaite@wiltshire.pnn.police.uk

WILTSHIRE POLICE

CPT Area Briefing

Wiltshire East Community Policing Team



Proud to serve and **protect** our communities

October 2019



PCSO Emily Johnson (Marlborough Town)

Emily.Johnson@wiltshire.pnn.police.uk



PCSO Melissa Camilleri (Marlborough Rural)

Melissa.Camilleri@wiltshire.pnn.police.uk

You can find out more about Wiltshire East CPT, including news stories and contacts for local officers, on our website: www.wiltshire.police.uk/WiltshireEast

WILTSHIRE POLICE

CPT Area Briefing

Wiltshire East Community Policing Team



Proud to serve and protect our communities

October 2019

LOCAL PRIORITIES

PRIORITIES FOR WILTSHIRE EAST CPT	UPDATE
Priority 1: Retail theft	
<p>Due to an increase in retail thefts we have decided this will now be a priority for our East Sector officers. Officers will be planning operations and carrying out pulse patrols during peak shopping times.</p>	<p>High visibility patrols are being conducted. We are also engaging with local businesses and the Town council with a view to implementing a Shop Watch scheme.</p>
Priority 2: Rural Crime	
<p>It is imperative that we maintain a high visible presence within our rural county. Albeit the weather is now turning, we are still aiming to regularly patrol our Beauty Spots and rural sites including churches. Due to their rural nature and number of visitors, they do unfortunately become a target of crime. These patrols are now including farm land by the permission of the land owners</p>	<p>Patrols are being conducted at all times of day and night. Recent week of action with intensified action in our rural communities.</p>

WILTSHIRE POLICE

CPT Area Briefing

Wiltshire East Community Policing Team



Proud to serve and **protect** our communities

October 2019

Priority 3: Community Speed Watch

Keeping our roads safe is extremely important within our area as we have several A Roads that pass through our County.

We will be receiving fortnightly updates from our Community Speed Watch Teams with specific areas to target. It is important that we work with the general public to identify unsafe road users within our county. We hope to show how hard we will be working to target the roads through our Social Media updates and cooperation with Community Speed Watch Schemes

Continued high visibility patrols. We will also target locally identified issues such as London Rd when identified.

Priority 4: Burglary

We have seen an increase in reports of both domestic and commercial burglaries within the East Sector.

Due to this patrols are being carried out at all times of day & night by officers.

The East sector is a large and very rural sector and we therefore encourage you to report any suspicious behaviour in your area.

Patrols are being conducted by officers and PCSO's.

Our PCSO's will be carrying out a 'Burglary Campaign' throughout November- we hope you will engage with them if you see them.

WILTSHIRE POLICE

CPT Area Briefing

Wiltshire East Community Policing Team



Proud to serve and protect our communities

October 2019

HIGH LEVEL PCC UPDATES

- **Recruitment** - Police officer recruitment continues with more than 500 applications received so far since the campaign launched on 23 September. Wiltshire Police is accepting applications until Sunday 13 October.
- **Community work** - In September PCC Angus Macpherson awarded a total of £22,500 from the Police Property Act to projects across the county which make a difference in their communities. Beneficiaries include a drop-in service for homeless people, a 12-week personal development course for unemployed young people and a pilot project using photography to engage with young people at risk of offending or exploitation. Full details are available on our website.
- **Herbert Protocol** – The PCC was proud to join Wiltshire Police, Swindon Borough Council, healthcare partners, Swindon Carers Centre and the Alzheimer's Society at the launch of the Herbert Protocol last month. It comprises of a document in which carers, family and friends of vulnerable adults can fill out key details about the individual as a pre-emptive measure in case they later go missing. This will enable the police to start their initial enquiries sooner with the aim of finding the missing person safe and well.

HIGH LEVEL FORCE UPDATES

- **County Lines** – The issue of gangs transporting Class A drugs from major cities such as London and Manchester into rural counties, is one which is attracting significant media attention. Here in Wiltshire we are raising awareness of the problem, and specifically the impact these crimes have on the wider community, as they are often linked to modern slavery and organised crime, with children and vulnerable adults being exploited. Please look out for local media coverage, or go to our website for more information.
- **Domestic abuse** – This month we are highlighting the work Wiltshire Police is doing to tackle domestic abuse, including educating the public about the support that is available for victims. This campaign will include a young mother, who has been the victim of domestic violence, speaking out about her story in the hope that she can encourage other victims to come forward and get support.
- **Rural crime** - During the beginning of October we are taking part in a national week of action targeting rural crime. Our work will include providing crime prevention advice and encouraging residents to report all incidents to the police, as well as having our Community Policing Teams and the Rural Crime Team out and about engaging with our rural communities.

WILTSHIRE POLICE

CPT Area Briefing

Wiltshire East Community Policing Team



Proud to serve and **protect** our communities

October 2019

GET INVOLVED

- You can keep up to date with the latest news in your area by signing up to our Community Messaging service – www.wiltsmessaging.co.uk
- You can follow your CPT on social media <https://www.wiltshire.police.uk/Followus>
- More information on your CPT area can be found here: www.wiltshire.police.uk and here www.wiltshire-pcc.gov.uk

FEEDBACK/ACTIONS TAKEN